

State of Wyoming Corner Record

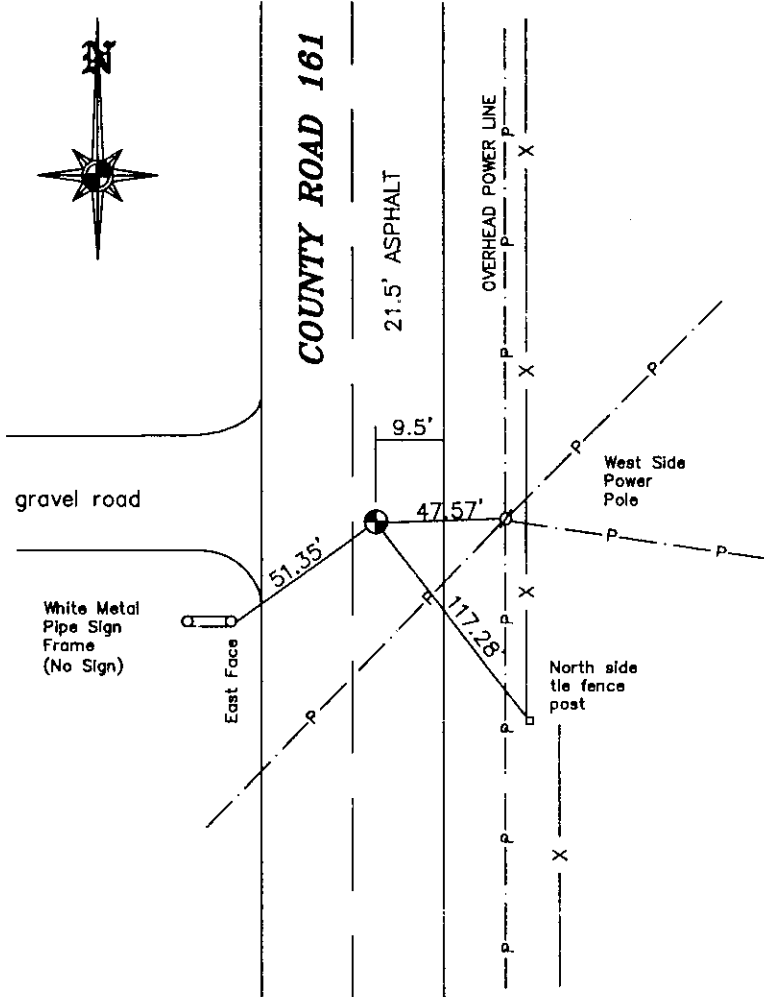
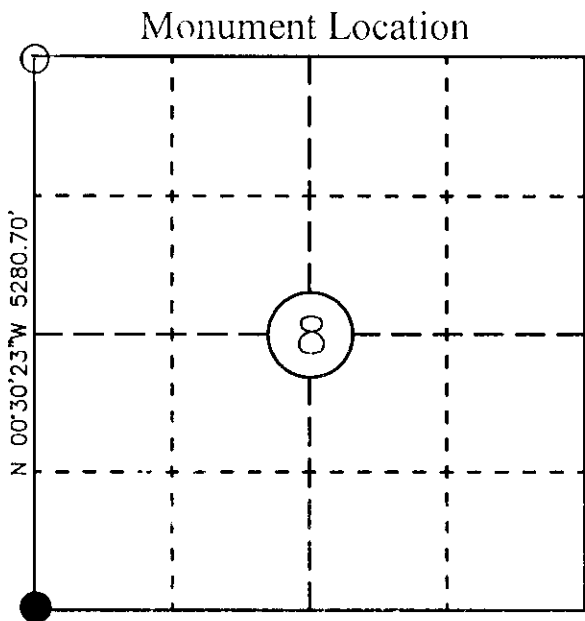
(In compliance with the *CORNER PERPETUATION AND FILING ACT*, Wyoming Statutes, 1977 Section 33-29-140, et. sq., and the Rules and Regulations of the Board of Professional Engineers and Professional Land Surveyors)

Reverse side of this form may be used if more space is needed.

Record of original survey and citation of source of historical information (if corner is lost or obliterated). Description of corner monumentation evidence found and/or monument and accessories established to perpetuate the location of this corner. Sketch of relative location of monument, accessories, and reference points with course and distance to adjacent corner(s) (if determined in this survey). Method and rationale for reestablishment of lost or obliterated corner.

FOUND P-K NAIL IN ASPHALT PATCH: ONE REMAINING TIE PER CORNER RECORD RECEIVED MAY 12, 1995, LARAMIE COUNTY CLERK FITS THE FOUND LOCATION. ESTABLISHED NEW TIES AS SHOWN.

ALL REFERENCES ARE 1" BLANK BRASS DISK SET IN ITEMS SHOWN WITH MAG NAIL; EXCEPT SIGN POSTS.



Date of Field Work: 4-20-06

Office Reference: 1142.04

Cross Index Plat

	1	2	3	4	5	6	7	8	9	10	11	12	13	14	15	16	17	18	19	20	21	22	23	24	25
A																									
B																									
C		6																							
D																									
E																									
F																									
G																									
H																									
J																									
K																									
L																									
M																									
N																									
O																									
P																									
Q																									
R																									
S																									
T																									
U																									
V																									
W																									
X																									
Y																									
Z																									
	1	2	3	4	5	6	7	8	9	10	11	12	13	14	15	16	17	18	19	20	21	22	23	24	25

Firm/Agency, Address

COFFEY ENGINEERING & SURVEYING, L.L.C.
 903 GRAND AVENUE
 LARAMIE, WYOMING 82070
 307.742.7425

This corner record was prepared by me or under my direction and supervision.

SFAL & SIGNATURE

Mark Reinholdt
5/15/2006

RECORDED 8/09/2006 AT 12:11 PM REC# 454101 JK# 1963 PG# 1337
 DEBRA K. LATHROP, CLERK OF LARAMIE COUNTY, WY PAGE 1 OF 1

Corner Name: SOUTHWEST CORNER SECTION 8, T. 13 N., R. 60 W., 6th P.M.

Cross Index No. J-5